

ScanTVS CS

Fast & accurate inspection for all printed components



Scan-TVS CS

Scan-TVS CS is an innovative scanner-based inspection system for complete inspection of proofs, label webs, cartons and nested press sheets. Scanner options range in size to permit scanning of extremely small to large format packaging components.

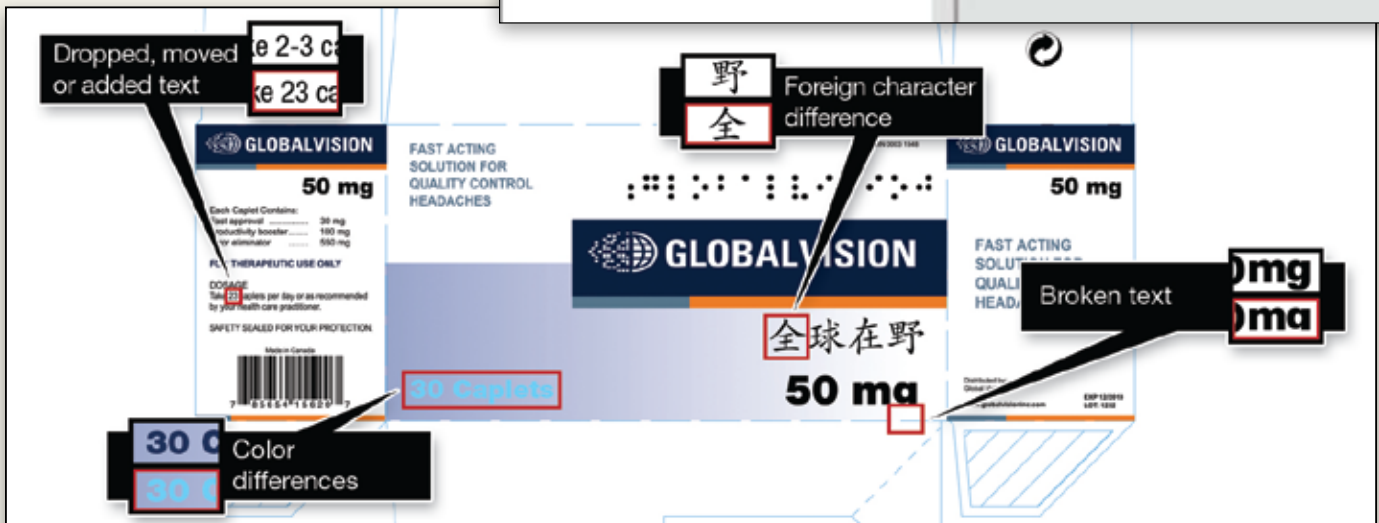
HIGHLIGHTS:

- Quickly compare all text & graphics of any print job
- Avoid time consuming reprints and reworks
- Fast & easy one click inspection
- Easy to use interface

QUICK DETECTION OF:

- Broken text
- Missing or added elements
- Print defects

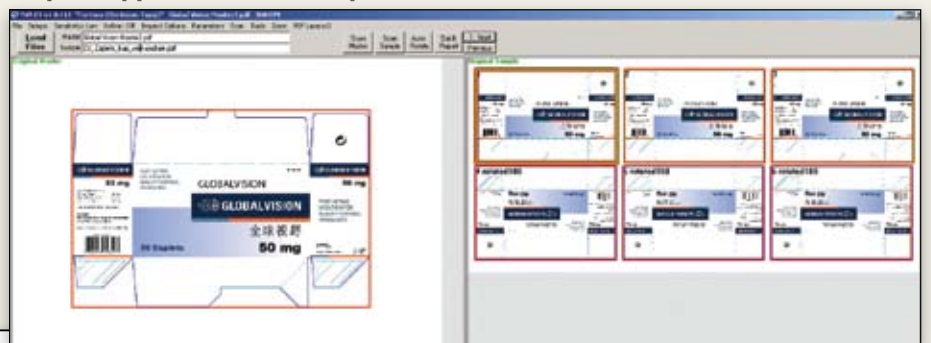
Easily pinpoint errors



Inspect approved master to sample



Inspect approved master to press sheet



Scan-TVS CS

INSPECTION CAPABILITIES:

- > File to file
- > File to print
- > Print to print

HIGHLIGHTED FEATURES:

- > Intelligent cropping
- > Overprint & layer handling
- > Automatic alignment & rotation
- > Large file handling
- > Reporting & commenting

HARDWARE REQUIREMENTS:

Platform	Windows XP/ Windows 7 (64 Bit Operating System for Large Files)
CPU Speed	1.8 Gigahertz dual core processor (64 Bit Processor recommended for Large Files)
Hard Drive	40 GB Minimum
Memory	4.0 GB RAM Minimum (6.0 GB RAM for Large Files)
Monitor Size	17 - 22 inches
Resolution	1280 x 1024 recommended (1024 x 768 minimum)
CD-ROM Drive	Any standard drive

SCANNERS TO FIT ALL YOUR INSPECTION NEEDS:

SCANNER TYPE	SCAN SPEED		
	MONOCHROME	COLOR	DIMENSIONS
A4	6.0"/s	4.0"/s	8.5" x 11.7"
A3	6.0"/s	4.0"/s	12.2" x 17.2"
A2	5.0"/s	3.0"/s	18" x 24"
36" ROLL	12.0"/s	0.6"/s	36" x unlimited length
42" ROLL	12.0"/s	0.6"/s	42" x unlimited length
54" ROLL	12.0"/s	1.5"/s	54" x unlimited length
SHEET FED	40-100ppm		

*Scanning speed in 400 dpi turbo

To find out how your company can benefit from Global Vision's solutions, contact us at:

(514) 624-4422 ext. 27 or
info@globalvisioninc.com