

BraillePoint™

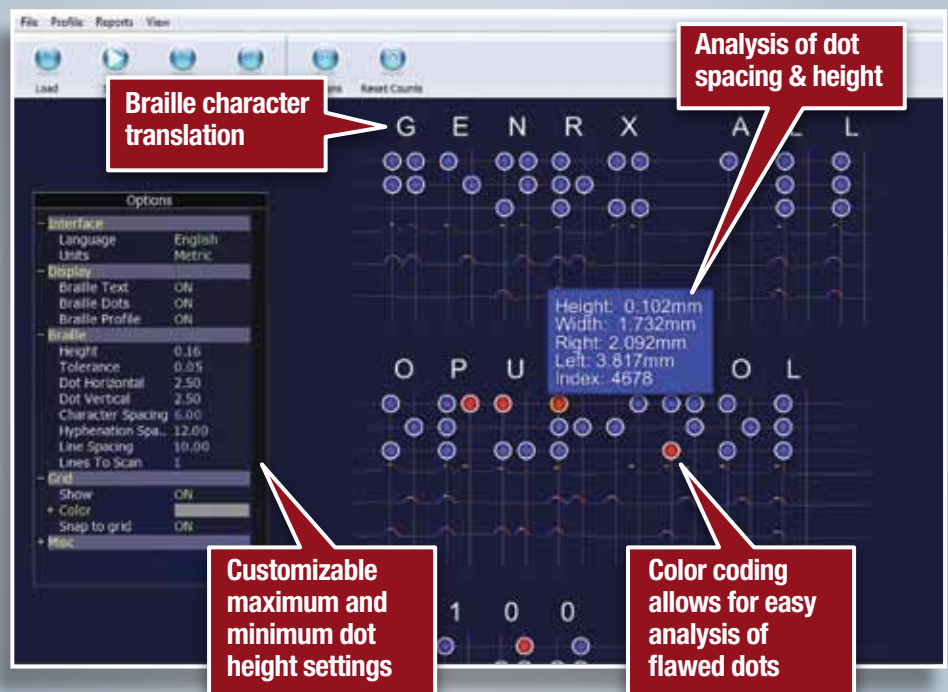
Braille Dot Measurement Tool

Global Vision's BraillePoint™ is an easy to use Braille dot QC tool perfect for measuring Braille dot height and verifying dot placement. With BraillePoint™, users can ensure the precision of all embossed and screen printed Braille found on cartons and labels.

BraillePoint™ uses the latest electronic measurement technology to measure Braille dot height directly. Unlike scanner and camera based measurement systems that are dependent on dot shadows and complex algorithms, BraillePoint™ is capable of providing the most accurate results.

With BraillePoint™, you can rest assured that all Braille is accurate, readable and meets international standards, all while eliminating manual checking and reducing inspection times.

- > Reduce inspection times.
- > Ensure accuracy & quality of Braille text.
- > Ensure compliance with international standards.



BraillePoint™



BraillePoint Features:

- > Analysis of dot spacing & height
- > Braille character recognition
- > Extensive reporting, detailing pass/fail for each Braille dot
- > Color coding allows for easy analysis of flawed dots
- > Customizable maximum and minimum dot height settings
- > Superior sample scan times
- > Inspection setup details easily saved
- > 21 CFR Part 11 Compliant & validation available

HARDWARE SPECIFICATIONS:

CPU	Intel Core 2 Processor
Monitor size	24 inch
Free Space	160 GB Hard Drive
Unit Dimensions	21" x 20" x 10"
Memory	4.0 GB RAM
Printer	Optional
CD-ROM Drive	Any standard drive
Braille Scan Area	210 mm x 297 mm (4 lines of Braille)
Braille Measurement Range	0.03mm – 0.5mm

SOFTWARE SPECIFICATIONS:

Operating System	Windows 7
User Access Level	Administrator, User
PDF Support	PDF viewer for reporting

To find out how your company can benefit from Global Vision's solutions, contact us at:

+1 (514) 624-4422

info@globalvisioninc.com



GLOBAL VISION
Automated Proofreading Solutions

www.globalvisioninc.com